



User's Manual



MU230
Wireless Broadband USB Modem



Table of contents

Introduction.....	3
Getting Started	5
Modem Installation	7
1.1 Connect MU230 to PC	7
1.2 Install USB driver and AxessManager ^W software	7
AxessManager ^W Operation Guide	15



Introduction

Thank you for purchasing Axisstel MU230 Wireless Broadband USB Modem. This user manual will help you setup, configure and outline best practices for maximizing your wireless home network performance with the Modem.

The MU230 USB Modems leverage WCDMA networks to allow mobile professionals to maintain productivity with secure, high speed access to email, the Internet, data intensive files and multi-media streaming. In addition, SMS messaging enables users to stay connected to colleagues, customers and family.

A universal USB connector allows for quick and easy connectivity to a desktop or laptop PC providing broadband data access from the home, office or while working remotely. Backward compatibility ensures services in GSM/EDGE coverage areas, while internal receive diversity antennas maximize coverage range and data throughput. The slim and compact MU230 Wireless Broadband USB Modems provide busy professionals with the versatility to stay productive and connected virtually anywhere, anytime from the home, office or while traveling.



SAFETY PRECAUTIONS

1. Avoid placing the Modem in a dusty location, or near a source of gas or fire.
2. Don't Shake, hit or drop the modem.
3. To clean the outside of the modem, use only a soft, dry cloth. The chemicals in alcohol, benzene or acetone can damage the surface of the modem.
4. Always put the cap on the Modem if not connected to PC.
5. Do not disassemble the modem.
6. Do not place the modem near water, for example, near a bathtub, sink, wet basement, or swimming pool.



Getting Started

Packages Contents

- ✓ HSUPA Modem
- ✓ User Manual

Indicating Lights

Green: no service is available

Blue: log-on the network

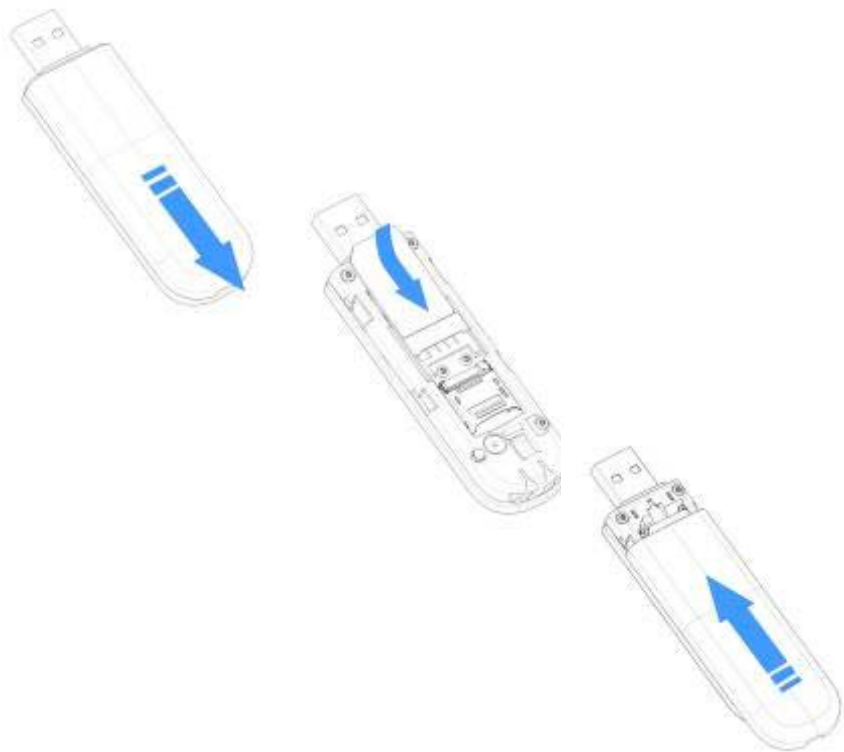
Purple: connecting to Internet.

Inserting SIM Card

To install your SIM card, follow the steps below:

1. If your SIM is attached to a card, detach it and remove any fragments of the card stuck to the SIM.
2. Slide the back cover to remove it from the phone then open the back cover down.
3. Insert SIM card into the thin SIM card slot on the upside of the modem as following Fig. Make sure that the SIM card is properly inserted and that gold-colored contact area on the card is facing downwards.
4. Put the back the cover

米





Modem Installation

Before you can begin using the Modem, you must:

- ✓ Install the Modem enabling software and driver
- ✓ Install AxessManager (or PC Sync)
- ✓ Have an activated SIM card inserted inside the Modem.

1.1 Connect MU230 to PC

This modem operates by receiving DC power from the PC power through the USB connector. To connect MU230 to the PC, remove the Modem cap and insert it to any available USB port on your PC. Make sure the Modem is firmly and securely connected.

1.2 Install USB driver and AxessManager^W software

System Requirements

(1) Recommended Specifications

CPU: Pentium III 550MHz or higher, IBM PC-Compatible

RAM: 256MB or more

VGA: Video card with 1024 I 768 resolution and 65536 or more colors

HDD: 200MB or more hard disk space

Others: CD-ROM Drive or DVD Drive

OS: Microsoft Windows 2000 or higher (Compatible with Vista version)



(2) Minimum Specifications

CPU: Pentium II 300MHz or higher, IBM PC-Compatible

RAM: 128MB or more

VGA: Video card with 1024 I 768 resolution and 65536 or more COLORS

HDD: 100MB or more hard disk space

Others: CD-ROM Drive or DVD Drive

OS: Microsoft Windows 2000 or higher

The entire process will take approximately 5 minutes to complete.

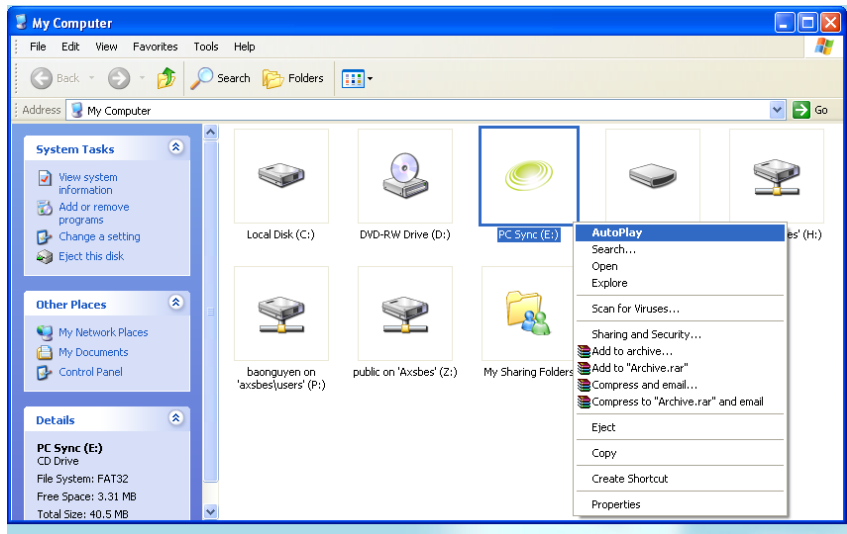
Your PC Operating System should be configured with AutoPlay enabled.

Step 1: Insert the Modem into your PC. You should see several pop-up .mini-windows at the lower right corner (for Windows OS) such as illustrated below

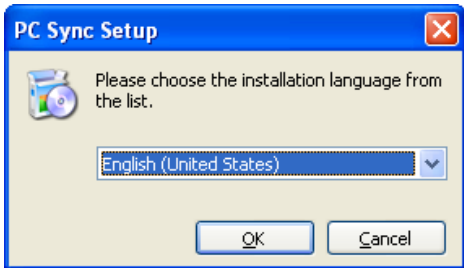




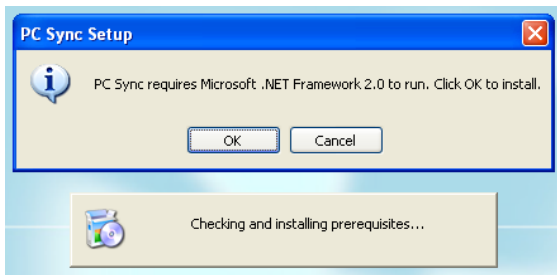
Step 2: If you forgot to configure your PC with AutoPlay enabled, click on “**Start**” and **My Computer**”, the right click on the folder “**PC Sync**” to hit on AutoPlay to continue to the next step. If your PC was configured with AutoPlay, skip this step.



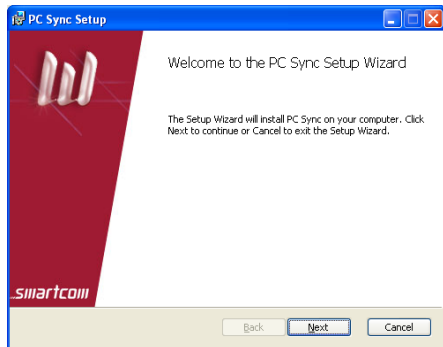
Step 3: The PC Sync setup wizard appears. Choose the proper language and click **[OK]** to continue



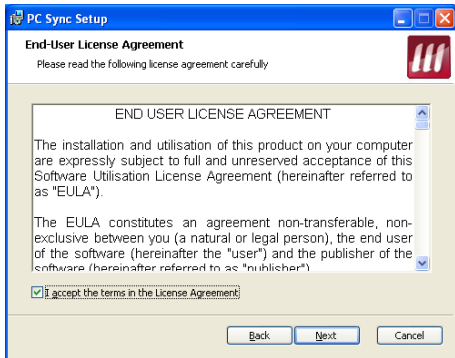
Step 4: PC Sync needs Microsoft .NET Framework to run. If your PC does not have this SW, PC Sync will install it to your computer. Click **[OK]** to continue with installing Framework. If your PC already has Framework installed, skip this step.



Step 5: The PC Sync setup wizard appears. Click **[Next]** to continue

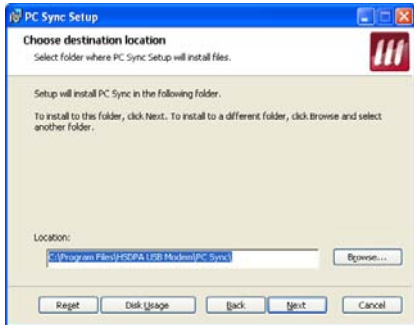


Step 6: Check the box of end-user agreement. Click **[Next]** to continue

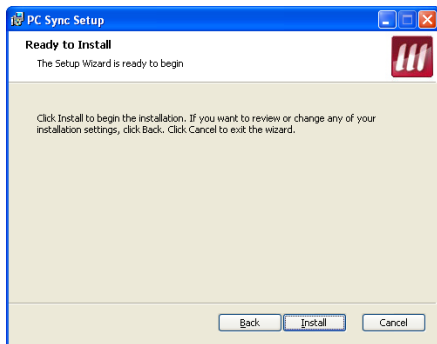




Step 7: If you need to change the location of AxessManager installed on your PC, click **[Browse]** button and point to the appropriate folder. If not, click **[Next]**

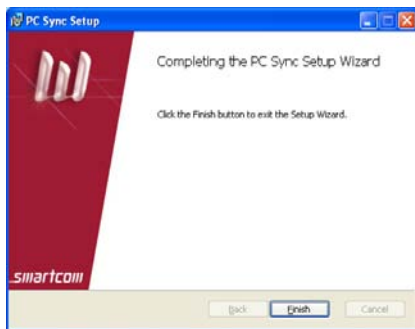


Step 8: Click Install to begin the process

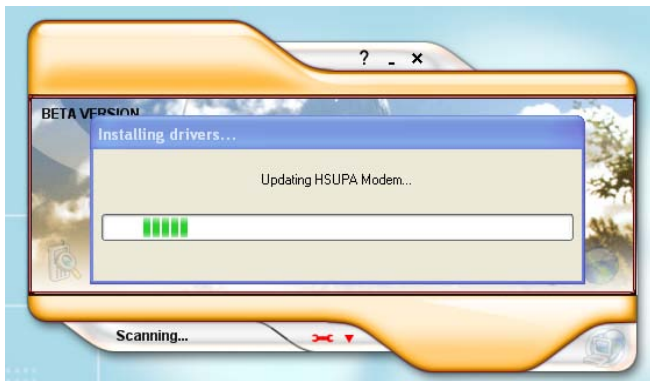




Step 9: Select **Finish** and complete the process



Step 10: PC Sync window will appear and attempt to install the Modem.





Step 11: After successfully initializing the Modem, all utility tools (Setup, Email, PC Sync) are made available. Your device and PC Sync are ready for use. Proceed with the next chapter.

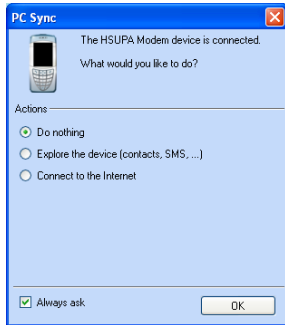




AxessManager^W Operation Guide

AxessManager^W is a SW utility that allows the administration of your Modem. AxessManager^W allows you to setup a data connection to browse the Internet and modify modem configurations.

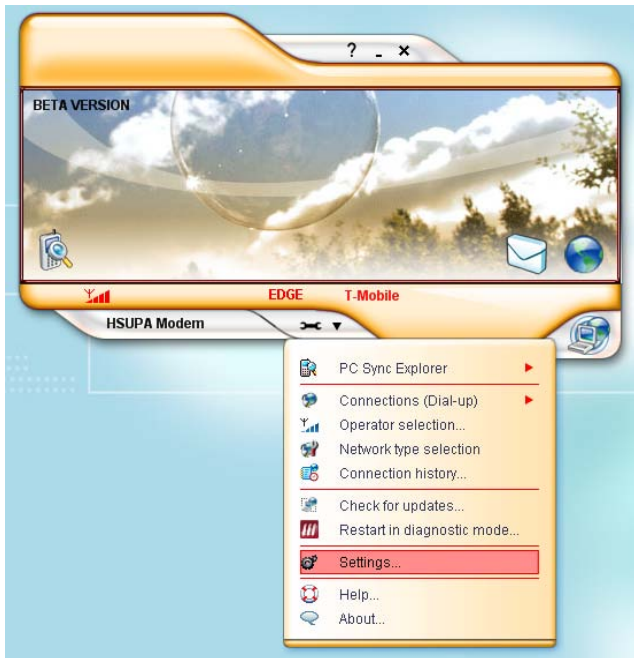
1. Once the modem is initialized, the window icons will change to show signal strength and network type. Several buttons, **Internet**, **Setting** and **Email** are activated to give access to the Modem.



2. The Modem will automatically identify the inserted SIM card and select the correct setting. It also automatically detects the network setting and populates the right



value for authentication server. In case you need to manually change these settings, click **[Setting]** button on the drop down menu in main window.

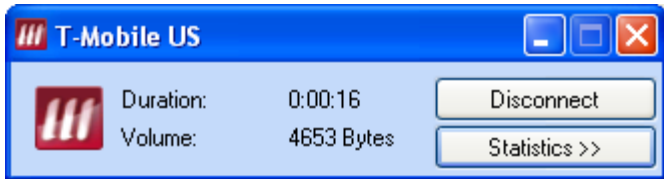




3. To begin a data session, click on the “Connect to the Internet” button.



4. An information window will appear at the lower right corner of your screen to indicate your data session has begun.





5. At this point, your PC is successfully connected to the Internet. You can launch all applications (e.g. email, MSN, web browsing...). After finishing your Internet session, click the **[Disconnect]** button to terminate your connection.

