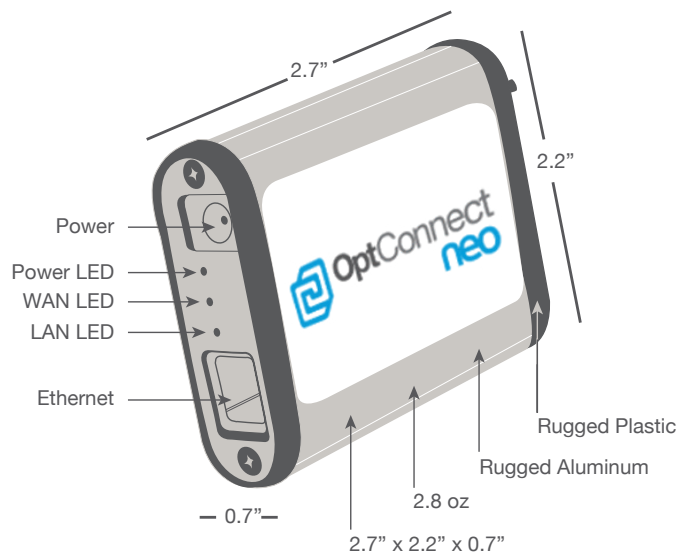


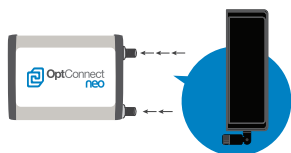
**Headache-Free connectivity for your IoT & M2M applications.**



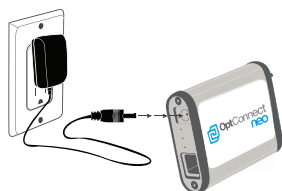
OptConnect neo	
Features	Advantages
<ul style="list-style-type: none"> <li>• <b>Plug-n-play</b> High-speed connectivity</li> <li>• <b>Lightweight</b> 2.8 oz</li> <li>• <b>Compact size</b> 2.7" x 2.2" x 0.7"</li> <li>• <b>Rugged</b> Aircraft grade Aluminum, Temp resistance -40c - +85</li> </ul>	<ul style="list-style-type: none"> <li>• Primary network connectivity for micro markets, kiosks, signs, POS, ATMs, etc.</li> <li>• Flexible and practical</li> <li>• Modular antennas</li> <li>• Flexible mounting options</li> <li>• Delivers speed and wide coverage (Cellular Technology 4G LTE)</li> <li>• 5v power</li> <li>• Enables remote device connectivity</li> <li>• Save money, time and improve business efficiency</li> <li>• Always on</li> <li>• Low power consumption 4G 10-15 watts peak</li> <li>• Built-in Firewall – 2.2</li> <li>• DHCP server for local automatic IP assignment – can assign static IPs               <ul style="list-style-type: none"> <li>Public and Private IP modes for local IP assignment</li> <li>NAT with VPN Passthru</li> <li>Domain name addressable</li> </ul> </li> <li>• Edge decision making – processing – WRT</li> <li>• High-Speed Data Connections</li> </ul>
Additional Features	
<ul style="list-style-type: none"> <li>• Cost-effective replacement for landline dialup circuits or analog cell-phones – Primary connectivity for PLCs, RTUs, POS, ATM solutions</li> <li>• Backup/redundant network connections for LANs</li> <li>• High speed data transfer rate</li> <li>• Full duplex transceiver ethernet port</li> <li>• LED network status indicators</li> <li>• Remotely manageable and upgradeable</li> </ul>	



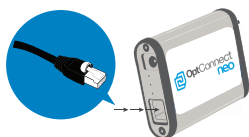
**1**  
Attach antennas.



**2**  
Apply power.



**3**  
Plug in Ethernet cable.



**4**  
Plug Ethernet cable into PC or router WAN port.



#### Wireless WAN

GSM	HSPA+, GPRS, EDGE - 800/850, 900, AWS, 1900, 2100 MHz (PTCRB Approval not complete)
CDMA	EV-DO Rev A and 1xRTT - 800/1900 MHz (Both Approved)
LTE	LTE 700 (B17), 850 (B5) AWS1700 (B4) 1900(B2) MHz LTE 700 (B13), AWS1700 (B4) MHz
WWAN Embedded Module	Telit 910 Series
SIM Slots	1 internal 3FF Micro-SIM Slot
Antenna Connectors	1 x 50 Ω SMA (Center pin: female)

#### Ethernet

Ports	1
Connector	RJ-45
Standard	IEEE 802.3
Physical Layer	10/100 Base-T
Data Rate	10/100 MBit/s
Mode	Full or Half duplex
Interface	Auto MDI/MDIX

#### Management

Fully Managed Service	OptConnect Portal
Processor and Memory	Atheros AR9331, 64MB RAM, 16MB FLASH
Protocol Support	HTTP, HTTPS, FTP, SSL

#### Power

Input	5 VDC (power supply with barrel connector included)
Consumption	Typical: 3.5 W; Max: 15 W

#### General

LEDs	Power On, LAN Connection, WWAN Service
Relative Humidity	5% to 95% (non-condensing)

#### Approvals

GSM/CDMA	Verizon ODI
Carrier Certifications	Certified by Verizon and most major carriers

**Need more information?**

Call our sales team at 1-877-678-3343